

Bilten

BEOGRADSKA
BERZA

Godina XXV
Broj 307
Avgust 2020.

MESEČNI PROMET / MONTHLY TURNOVER

TRŽIŠNI SEGMENT / MARKET SEGMENT	Promet RSD / Turnover RSD	Promena % / % Change (RSD)*	Promet EUR / Turnover EUR	Promena % / % Change (EUR)*	Broj transakcija / No of Transactions
PRIME LISTING-akcije	152,595,110	+428.04%	1,297,671	+428.01%	825
PRIME LISTING-obveznice Republike Srbije	359,690,687	-86.49%	3,058,986	-86.48%	16
STANDARD LISTING-akcije	257,695,813	+506.43%	2,191,479	+506.40%	117
OPEN MARKET-akcije	25,293,837	-24.16%	215,106	-24.16%	115
MTP-akcije	23,454,407	-19.65%	199,460	-19.66%	94

* mesečna promena / * monthly change

METODE TRGOVANJA / TRADING METHODS	Promet RSD / Turnover RSD	Promena % / % Change (RSD)*	Promet EUR / Turnover EUR	Promena % / % Change (EUR)*	Broj transakcija / No of Transactions
Kontinuirano trgovanje / Continuous trading method	805,417,554	-71.19%	6,849,493	-71.19%	1,165
Blok trgovanja / Block trading	13,312,300	+100.00%	113,208	+100.00%	2
Ukupno / Total	818,729,854	-70.71%	6,962,701	-70.71%	1,167

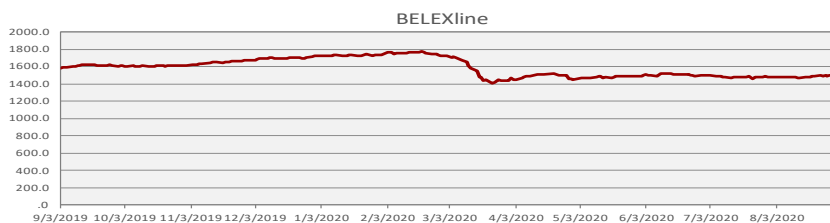
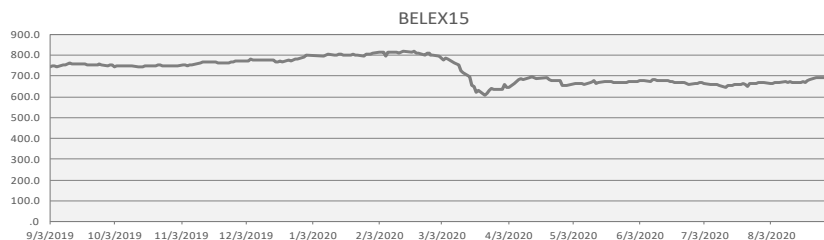
* mesečna promena / * monthly change

STRUKTURA TRGOVANJA / TRADING STRUCTURE	Učešće u ukupnom prometu / Total Turnover	Učešće u ukupnom broju transakcija / Total No. Of Trades	Učešće u prometu akcijama / Turnover - Shares	Učešće u broju transakcija akcijama / No of Trades - Shares
Regulisano tržište / Regulated Market	97.14%	91.95%	94.89%	91.83%
MTP	2.86%	8.05%	5.11%	8.17%
METODE TRGOVANJA / TRADING METHODS				
Kontinuirano trgovanje / Continuous trading	98.37%	99.83%	97.10%	99.83%
Blok trgovanja / Block trading	1.63%	0.17%	2.90%	0.17%
VRSTE HOV / SECURITY TYPE				
Akcije / Shares	56.07%	98.63%	-	-
Obveznice Republike Srbije / RS Bonds	43.93%	1.37%	-	-
Korporativne obveznice / Corporate Bonds	0.00%	0.00%	-	-
INDEKSI / INDICES				
BELEX15	52.08%	84.40%	92.90%	85.58%
BELEXline	52.38%	87.49%	93.43%	88.71%

PROMET U PRETHODNIH 12 MESECI / TURNOVER IN PREVIOUS 12 MONTHS

Mesec / Month	Listing	Open Market	Regulisano / Regulated Market	MTP	Ukupno / Total	Br. Transakcija / No of Transactions
AVGUST 2020	769,981,610	25,293,837	795,275,447	23,454,407	818,729,854	1,167
JUL 2020	2,732,815,873	33,352,111	2,766,167,984	29,191,898	2,795,359,882	1,238
JUN 2020	1,284,277,059	61,939,404	1,346,216,463	18,295,881	1,364,512,344	1,862
MAJ 2020	3,095,888,499	54,226,931	3,150,115,430	3,021,914	3,153,137,344	1,384
APRIL 2020	5,307,696,037	103,385,875	5,411,081,912	11,449,781	5,422,531,693	1,039
MART 2020	9,030,036,635	131,788,131	9,161,824,766	267,102,814	9,428,927,580	2,180
FEBRUAR 2020	5,854,541,955	538,203,366	6,392,745,321	80,558,729	6,473,304,050	1,718
JANUAR 2020	4,298,544,657	66,229,693	4,364,774,350	687,189,262	5,051,963,612	1,826
DECEMBAR 2019	9,839,474,538	23,568,588	9,863,043,126	43,301,493	9,906,344,619	2,222
NOVEMBAR 2019	26,582,250,140	2,803,970,842	29,386,220,982	298,387,620	29,684,608,602	2,506
OKTOBAR 2019	1,402,760,533	194,835,647	1,597,596,180	341,111,753	1,938,707,933	3,532
SEPTEMBAR 2019	8,504,327,210	101,386,268	8,605,713,478	36,937,388	8,642,650,866	2,135

BELEX15	BELEX15	BELEXline
Vrednost / Value	693.80	1,502.12
% Promena / % Change	+ 3.88%	+ 1.53%
Promena / Change	+ 25.92	+ 22.57
Promet/ Turnover	426,435,178	428,858,134
Vrednost na dan 7/31/2020.	667.88	1,477.01
Najviša vrednost/ Maximum	694.91	1,502.12
Najniža vrednost/ Minimum	655.35	1,471.86
Godišnja promena / Annual change	-13.46%	-13.01%
PE	8.38	8.90
PB	0.62	0.61
FIS	58.17	57.86
b-FIS	38.53	38.31
s-FIS	77.80	77.40



MESEČNI PREGLED PO HARTIJAMA IZ KORPE INDEKSA BELEX15 / STATISTICS BY BELEX15 BASKET SECURITIES

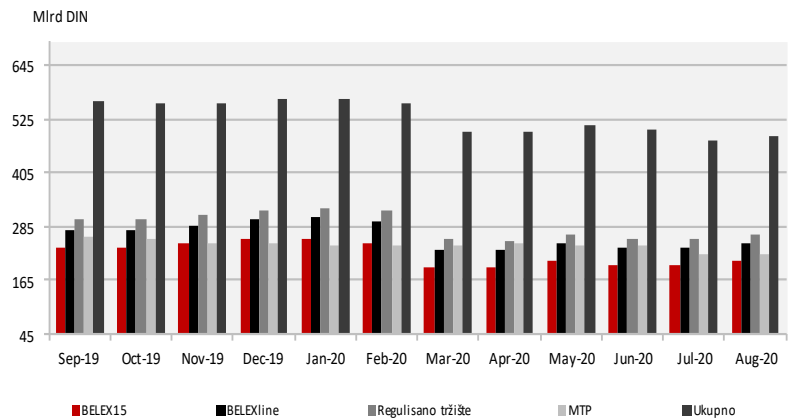
	AERO	ALFA	ENHL	FTO
Poslednja cena / Last Price	926	23,500	420	2,550
Broj transakcija / No. of Trades	342	5	8	7
Obim trgovanja / Volume	5,446	60	202,783	1,162
Vrednost prometa / Turnover RSD	4,980,495	1,410,000	78,340,560	2,951,900
Vrednost prometa EUR / Turnover EUR	42,355	11,992	666,201	25,103
Tržišna kapitalizacija / Market Cap	32,434,195,454	3,697,302,000	4,591,142,640	6,732,000,000
Tržišna kapitalizacija EUR / Market Cap EUR	275,820,683	31,441,889	39,043,117	57,248,987
Prosek prometa RSD / Average Turnover RSD	237,166.43	67,142.86	3,730,502.86	140,566.67
Prosek prometa EUR / Average Turnover EUR	2,016.92	571.03	31,723.85	1,195.39
Prosek broja transakcija / Average No. of Trades	16.29	0.24	0.38	0.33
FIS	69.73%	20.00%	49.95%	2.90%
b-FIS	83.16%	%	0.05%	5.81%
s-FIS	56.30%	40.00%	99.84%	%

	IMPL	JESV	KMBN	MTLC
Poslednja cena / Last Price	3,700	6,500	2,650	1,900
Broj transakcija / No. of Trades	6	14	56	47
Obim trgovanja / Volume	323	415	33,385	89,630
Vrednost prometa / Turnover RSD	1,195,100	2,698,650	84,703,863	170,293,300
Vrednost prometa EUR / Turnover EUR	10,163	22,949	720,348	1,448,181
Tržišna kapitalizacija / Market Cap	3,486,461,900	1,802,924,500	44,567,583,400	3,876,000,000
Tržišna kapitalizacija EUR / Market Cap EUR	29,648,903	15,332,086	379,003,121	32,961,538
Prosek prometa RSD / Average Turnover RSD	56,909.52	128,507.14	4,033,517.29	8,109,204.76
Prosek prometa EUR / Average Turnover EUR	483.97	1,092.83	34,302.29	68,961.00
Prosek broja transakcija / Average No. of Trades	0.29	0.67	2.67	2.24
FIS	0.00%	5.78%	62.27%	56.09%
b-FIS	%	11.57%	86.32%	16.74%
s-FIS	%	%	38.21%	95.44%

	NHIS	TGAS
Poslednja cena / Last Price	580	12,900
Broj transakcija / No. of Trades	471	29
Obim trgovanja / Volume	119,807	829
Vrednost prometa / Turnover RSD	69,226,755	10,634,555
Vrednost prometa EUR / Turnover EUR	588,712	90,437
Tržišna kapitalizacija / Market Cap	94,575,032,000	13,372,888,200
Tržišna kapitalizacija EUR / Market Cap EUR	804,266,903	113,723,159
Prosek prometa RSD / Average Turnover RSD	3,296,512.14	506,407.38
Prosek prometa EUR / Average Turnover EUR	28,033.93	4,306.53
Prosek broja transakcija / Average No. of Trades	22.43	1.38
FIS	68.82%	84.81%
b-FIS	70.93%	83.86%
s-FIS	66.71%	85.76%

TRŽIŠNA KAPITALIZACIJA / MARKET CAPITALIZATION

	U hiljadama / In thousands RSD	U hiljadama / In thousands EUR
Ukupno/Total	488,381,790	4,153,203
Regulisano tržište/ Regulated Market	267,177,243	2,272,078
Listing	197,753,182	1,681,695
Prime Listing –akcije / shares	147,506,674	1,254,398
Standard Listing-akcije / shares	50,246,508	427,297
Open Market	69,424,061	590,383
MTP	221,204,548	1,881,125
BELEX15	209,135,530	1,778,490
BELEXline	246,113,101	2,092,948


SEKTORSKA KLASIFIKACIJA – AKCIJE / SECTOR CLASSIFICATION – SHARES

Sektor / Sector	Promet – Akcije / Turnover - Shares	Br. transakcija – Akcije / No. Of Trades - Shares	Tržišna kapitalizacija / Market Capitalization	FIS
Prerađivačka industrija	25,387,475	118	171,464,851,078	38.12%
Rudarstvo	71,373,855	472	95,237,388,394	66.75%
Finansijske delatnosti i delatnost osiguranja	335,348,192	138	70,187,146,651	55.97%
Trgovina na veliko i malo i popravka motornih vozila	12,787,952	15	40,464,074,078	0.00%
Poslovanje nekretninama	4,980,495	342	33,894,051,712	69.73%
Građevinarstvo	6,797,090	35	25,299,793,317	27.38%
Snabdevanje električnom energijom, gasom i parom	47,300	4	15,906,303,600	0.00%
Poljoprivreda, šumarstvo i ribarstvo	1,040,300	3	13,331,986,617	11.46%
Saobraćaj i skladištenje	102,230	6	12,009,138,885	0.00%
Usluge smeštaja i ishrane	1,158,750	9	3,957,274,006	0.00%
Stručne, naučne, inovacione i tehničke delatnosti		0	3,502,454,736	0.00%
Informisanje i komunikacije	15,528	9	1,849,217,118	50.00%
Administrativne i pomoćne uslužne delatnosti		0	731,657,793	0.00%
Obrazovanje		0	207,974,124	0.00%
Ostale uslužne delatnosti		0	174,410,100	0.00%
Umetnost, zabava i rekreacija		0	102,219,000	0.00%
Snabdevanje vodom i upravljanje otpadnim vodama		0	58,057,137	0.00%
Zdravstvena i socijalna zaštita		0	3,792,040	0.00%

UČEŠĆE ČLANOVA U PROMETU / PARTICIPATION OF STOCK EXCHANGE MEMBERS IN THE TURNOVER
REGULISANO TRŽIŠTE / REGULATED MARKET

Član Berze / Member	Udeo u prometu / Participation in Turnover (%)	Udeo u broju transakcija / Participation in No. Of Transactions (%)
Vojvođanska banka a.d., Novi Sad	36.47%	12.30%
UniCredit Bank Srbija a.d., Beograd	17.39%	0.05%
M&V Investments a.d., Beograd	13.33%	4.15%
Raiffeisen banka a.d., Beograd	11.46%	4.29%
Dunav Stockbroker a.d., Beograd	9.69%	17.94%
Komercijalna banka a.d., Beograd	5.54%	17.19%
Momentum Securities a.d., Novi Sad	1.66%	1.86%
Convst a.d., Novi Sad	1.16%	2.28%
Illirika investments a.d., Beograd	0.83%	2.28%
Tesla Capital a.d., Beograd	0.74%	2.98%
Ostali	1.73%	34.67%

MTP

Član Berze / Member	Udeo u prometu / Participation in Turnover (%)	Udeo u broju transakcija / Participation in No. Of Transactions (%)
M&V Investments a.d., Beograd	39.95%	16.85%
Vojvođanska banka a.d., Novi Sad	20.32%	9.78%
Illirika investments a.d., Beograd	19.03%	20.65%
Banka Poštanska štedionica a.d., Beograd	7.03%	3.26%
Tesla Capital a.d., Beograd	5.41%	4.35%
Euro fineks broker a.d., Beograd	2.67%	14.67%
Komercijalna banka a.d., Beograd	2.51%	17.93%
Intercity broker a.d., Beograd	2.40%	7.61%
Mediolanum invest a.d., Beograd	0.47%	1.63%
Momentum Securities a.d., Novi Sad	0.14%	1.09%
Ostali	0.07%	2.17%

UČEŠĆE STRANIH INVESTITORA / FOREIGN INVESTORS PARTICIPATION—FIT, FIS, FIB

Mesec / Month	FIT	FIS	b-FIS	s-FIS	FIB
AVGUST 2020	36.27%	54.57%	36.65%	72.48%	12.91%
JUL 2020	11.33%	37.77%	35.34%	40.20%	10.00%
JUN 2020	36.22%	47.86%	36.49%	59.23%	33.22%
MAJ 2020	6.15%	28.74%	23.40%	34.07%	4.17%
APRIL 2020	20.63%	34.99%	29.08%	40.90%	19.88%
MART 2020	13.06%	26.78%	20.15%	33.40%	12.06%
FEBRUAR 2020	13.76%	14.81%	11.82%	17.80%	13.61%
JANUAR 2020	23.00%	44.91%	6.14%	83.67%	18.28%
DECEMBAR 2019	3.05%	34.56%	59.67%	9.45%	2.17%
NOVEMBAR 2019	44.85%	45.35%	0.72%	89.97%	27.10%
OKTOBAR 2019	14.49%	25.16%	28.40%	21.93%	6.82%
SEPTEMBAR 2019	5.01%	39.34%	28.16%	50.51%	3.60%

Prema specifikaciji klijenata Centralnog registra / According to the Central depository clients

NAJVEĆE PROMENE CENE, REGULISANO TRŽIŠTE / BIGGEST PRICE CHANGES, REGULATED MARKET

Izdavalac / Issuer	Cena / Price 31.08.2020.	Cena / Price 31.07.2020.	Promena % / % Change	Izdavalac / Issuer	Cena / Price 31.08.2020.	Cena / Price 31.07.2020.	Promena % / % Change
Komercijalna banka a.d., Beograd,	900	800	+ 12.50%	Rimex a.d., Beograd, RMKS	2,250	3,000	-25.00%
Globos osiguranje a.d., Beograd, GLOS	390	350	+ 11.43%	Jedinstvo a.d., Sevojno, JESV	6,500	6,850	-5.11%
Komercijalna banka a.d., Beograd,	2,650	2,400	+ 10.42%	Dunav osiguranje a.d., Beograd,	3,001	3,100	-3.19%
NIS a.d., Novi Sad, NIIS	580	548	+ 5.84%	Fintel energija a.d., Beograd, FINT	600	614	-2.28%
Energoprojekt holding a.d., Beograd, ENHL	420	400	+ 5.00%	Messer Tehnogas a.d., Beograd, TGAS	12,900	12,920	-0.15%

NAJVEĆA VREDNOST PROMETA, REGULISANO TRŽIŠTE / BIGGEST TURNOVER, REGULATED MARKET

Izdavalac / Issuer	Vrednost prometa / Turnover	Blok trgovanja / Block Trades	Izdavalac / Issuer	Vrednost prometa / Turnover	Blok trgovanja / Block Trades
Metalac a.d., Gornji Milanovac, MTLT	170,293,300	0	Philip Morris Operations a.d., Niš, DINNPB	6,719,026	0
Komercijalna banka a.d., Beograd, KMBN	84,703,863	0	Aerodrom Nikola Tesla a.d., Beograd, AERO	4,980,495	0
Energoprojekt holding a.d., Beograd, ENHL	78,340,560	0	Galenika Fitofarmacija a.d., Zemun, FITO	2,951,900	0
NIS a.d., Novi Sad, NIIS	69,226,755	0	Jedinstvo a.d., Sevojno, JESV	2,698,650	0
Messer Tehnogas a.d., Beograd, TGAS	10,634,555	0	Alfa plam a.d., Vranje, ALFA	1,410,000	0

**NAJNIŽI P/E, REGULISANO TRŽIŠTE /
LOWEST P/E, REGULATED MARKET**

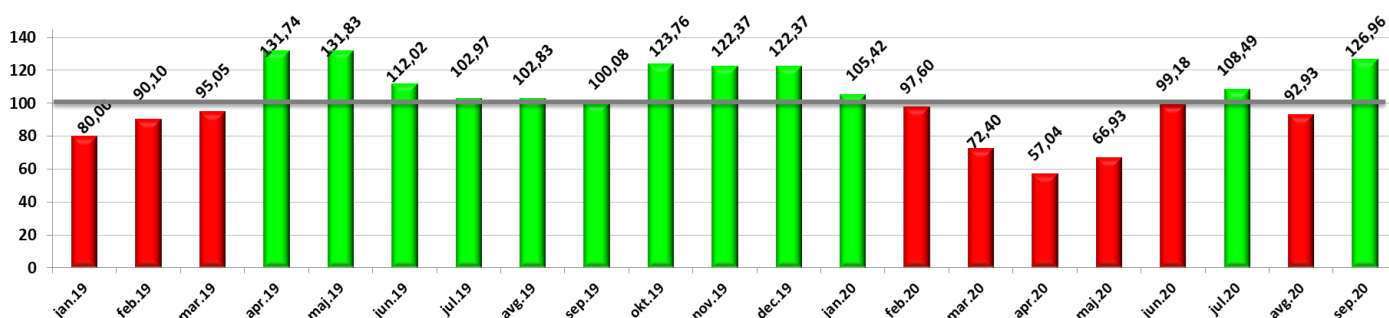
Izdavalac / Issuer	P/E	Izdavalac / Issuer	P/E
Dunav osiguranje a.d., Beograd	4.22	Impol Seval a.d., Sevojno	6.91
Komercijalna banka a.d., Beograd	5.09	Messer Tehnogas a.d., Beograd	7.47
Jedinstvo a.d., Sevojno	5.29	ALTA banka a.d., Beograd	7.78
NIS a.d., Novi Sad	5.34	VP Dunav a.d., Bačka Palanka	8.12
Voda Vrnjci a.d., Vrnjačka Banja	6.56	Galenika Fitofarmacija a.d., Zemun	9.79

**NAJNIŽI P/B, REGULISANO TRŽIŠTE /
LOWEST P/B, REGULATED MARKET**

Izdavalac / Issuer	P/B	Izdavalac / Issuer	P/B
Voda Vrnjci a.d., Vrnjačka Banja	0.25	Alfa plam a.d., Vranje	0.45
ALTA banka a.d., Beograd	0.35	Energoprojekt holding a.d., Beograd	0.51
NIS a.d., Novi Sad	0.36	Impol Seval a.d., Sevojno	0.51
Lasta a.d., Beograd	0.37	Komercijalna banka a.d., Beograd	0.60
Kopaonik a.d., Beograd	0.40	Jedinstvo a.d., Sevojno	0.64

NAJVEĆA TRŽIŠNA KAPITALIZACIJA, REGULISANO TRŽIŠTE / BIGGEST MARKET CAPITALIZATION, REGULATED MARKET

Izdavalac / Issuer	Simbol	Tržišna kapitalizacija - mil RSD / Market Capitalization—mil RSD	FFc	Izdavalac / Issuer	Simbol	Tržišna kapitalizacija - mil RSD / Market Capitalization—mil RSD	FFc
NIS a.d., Novi Sad	NIIS	94,575,032	0.14	Messer Tehnogas a.d., Beograd	TGAS	13,372,888	0.18
Komercijalna banka a.d., Beograd	KMBN	44,567,583	0.17	Dunav osiguranje a.d., Beograd	DNOS	12,682,589	0.06
Aerodrom Nikola Tesla a.d., Beograd	AERO	32,434,195	0.15	Galenika Fitofarmacija a.d., Zemun	FITO	6,732,000	0.28
Philip Morris Operations a.d., Niš	DINNPB	19,852,608	0.11	Energoprojekt holding a.d., Beograd	ENHL	4,591,143	0.15
Fintel energija a.d., Beograd	FINT	15,906,304	0.06	Metalac a.d., Gornji Milanovac	MTLC	3,876,000	0.81

BELEXsentiment


LISTING

PRIME LISTING—AKCIJE / SHARES

Izdavalac / Issuer	Simbol / Symbol	Cena / Price	Mesečna promena % / Monthly Change %	Obim / Volume	Promet (RSD) / Turnover (RSD)	Raspon cene-52 nedelje / 52 Weeks High/Low	Broj emitovanih akcija / Number of Shares Issued	%Prinos (dividenda) / Dividend	P/E	P/B
Aerodrom Nikola Tesla a.d., Beograd	AERO	926	+ 2.89%	5,446	4,980,495	710 - 1,100	35,026,129	1.40	-71.46	1.09
Energoprojekt holding a.d., Beograd	ENHL	420	+ 5.00%	202,783	78,340,560	380 - 730	10,931,292	0.00	-162.45	0.51
Fintel energija a.d., Beograd	FINT	600	-2.28%	80	47,300	530 - 670	26,510,506	0.00	-281.28	34.15
NIS a.d., Novi Sad	NIS	580	+ 5.84%	119,807	69,226,755	490 - 760	163,060,400	0.06	5.34	0.36

PRIME LISTING—OBVEZNICE RS / RS BONDS

Simbol / Symbol	Cena / Price	Mesečna promena %	Promet RSD / Turnover RSD	Mesečni raspon cene / Monthly High/Low
RSO1491	137.9000	0.0000%	13,238,400	137.9000-137.9000
RSO16142	110.6224	+ 0.1718%	276,556,000	110.6224-110.6224
RSO20191	110.5069	+ 1.4050%	64,969,935	110.5069-110.5069
RSSDS20213	96.9000	-0.0825%	1,118,566	96.9000-96.9000
RSSDS20214	96.0000	+ 0.0208%	1,107,430	95.9000-96.0000
RSSDS20225	94.9000	-0.0842%	732,077	94.9000-94.9000
RSSDS20226	93.5000	-0.5121%	915,676	93.5000-94.0000
RSSDS20237	92.5000	-0.5162%	359,098	92.5000-92.5000
RSSDS20238	89.9000	-0.0889%	693,506	89.9000-89.9000

STANDARD LISTING—AKCIJE / SHARES

Izdavalac / Issuer	Simbol / Symbol	Cena / Price	Mesečna promena % / Monthly Change %	Obim / Volume	Promet (RSD) / Turnover (RSD)	Raspon cene-52 nedelje / 52 Weeks High/Low	Broj emitovanih akcija / Number of Shares Issued	%Prinos (dividenda) / Dividend	P/E	P/B
Jedinstvo a.d., Sevojno	JESV	6,500	-5.11%	415	2,698,650	5,500 - 7,020	277,373	0.05	5.29	0.64
Komercijalna banka a.d., Beograd	KMBN	2,650	+ 10.42%	33,385	84,703,863	2,150 - 3,380	16,817,956	0.00	5.09	0.60
Metalac a.d., Gornji Milanovac	MTLC	1,900	0.00%	89,630	170,293,300	1,750 - 2,200	2,040,000	0.04	14.01	1.15

OPEN MARKET

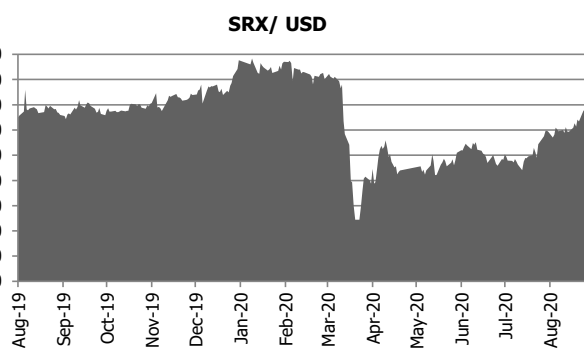
AKCIJE / SHARES

Izdavalac / Issuer	Simbol / Symbol	Cena / Price	Mesečna promena % / Monthly Change %	Obim / Volume	Promet (RSD) / Turnover (RSD)	Raspon cene-52 nedelje / 52 Weeks High/Low	Broj emitovanih akcija / Number of Shares Issued	Tržišna kapitalizacija / Market Capitalization
Alfa plam a.d., Vranje	ALFA	23,500	0.00%	60	1,410,000	23500-30950	157,332	3,697,302
Philip Morris Operations a.d., Niš	DINNPB	6,000	+ 2.63%	1,166	6,719,026	3900-6500	3,308,768	19,852,608
Dunav osiguranje a.d., Beograd	DNOS	3,001	-3.19%	103	315,906	2500-4000	4,226,121	12,682,589
Galenika Fitofarmacija a.d., Zemun	FITO	2,550	0.00%	1,162	2,951,900	2400-3199	2,640,000	6,732,000
Globos osiguranje a.d., Beograd	GLOS	390	+ 11.43%	542	194,190	300-599	1,369,237	534,002
Impol Seval a.d., Sevojno	IMPL	3,700	0.00%	323	1,195,100	3000-4000	942,287	3,486,462
Komercijalna banka a.d., Beograd	KMBNPB	900	+ 12.50%	550	495,000	610-1390	373,510	336,159
Kopaonik a.d., Beograd	KOPB	7,100	0.00%	22	156,200	5501-7100	138,906	986,233
Lasta a.d., Beograd	LSTA	545	0.00%	70	38,150	500-730	2,300,058	1,253,532
Rimex a.d., Beograd	RMKS	2,250	-25.00%	515	1,158,750	2250-3400	133,687	300,796
Messer Tehnogas a.d., Beograd	TGAS	12,900	-0.15%	829	10,634,555	10300-16000	1,036,658	13,372,888
Tigar a.d., Pirot	TIGR	20	0.00%	1,253	25,060	20-65	8,156,236	163,125

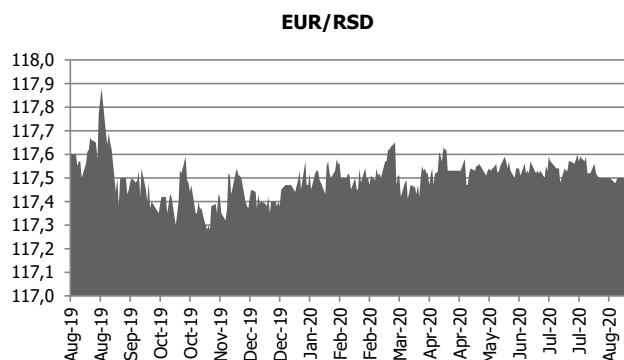
AKCIJE

Izdavalac	Simbol	Cena	Mesečna promena %	Obim	Promet (DIN)	Raspon cene-52 nedelje	Broj emitovanih akcija	Tržišna kapitalizacija
AMS Osiguranje a.d. , Beograd	AMSO	1,005	+ 0.50%	783	786,915	590-1200	314,550	316,123
AMS Osiguranje a.d. , Beograd	AMSOPB	660	+ 1.54%	300	193,398	630-1000	100,000	66,000
Aquatus a.d. , Beograd	AQUA	106	0.00%	2,199	233,370	106-107	237,718	25,198
BAS a.d. , Beograd	BASB	801	+ 0.13%	80	64,080	746-801	311,187	249,261
Borac a.d. , Šurjan	BRCS	1,458	0.00%	550	801,900	1458-1458	71,412	104,119
Čoka duvanska industrija a.d. , Čoka	COKA	9,707	0.00%	201	1,951,404	9707-10004	39,630	384,688
Goša montaža a.d. , Beograd	GMON	2,200	+ 22.22%	2	4,400	1800-2500	221,138	486,504
Geosonda - Fundiranje a.d. , Beograd	GSFD	580	0.00%	143	82,940	500-825	76,336	44,275
Invest - Import a.d. , Beograd	INIM	3,500	-7.89%	27	94,500	3500-3800	40,890	143,115
Omoljica a.d. , Omoljica	OMOL	800	0.00%	298	238,400	800-850	326,875	261,500
Politika a.d. , Beograd	PLTK	8	0.00%	1,941	15,528	8-13	14,066,121	112,529
Prvi partizan Emo a.d. , Užice	PPEMO	180	0.00%	239	43,020	180-180	83,382	15,009
Preduzeće za puteve Valjevo a.d. , Valjevo	PPVA	1,610	-19.50%	300	483,000	1352-2600	201,904	325,065
Putevi a.d. , Užice	PUUE	112	-2.61%	250	28,000	80-179	982,241	110,011
Svetlost a.d. , Beograd	SVTS	1,000	0.00%	3,410	3,410,000	1000-1000	42,395	42,395
Tehnohemija a.d. , Beograd	THHM	227	0.00%	326	74,002	120-285	1,024,544	232,571
Uniprom a.d. , Novi Pazar	UNPR	750	0.00%	2,065	1,548,750	500-750	201,890	151,418
Voćar a.d. , Svilajnac	VRBG	750	0.00%	118	88,500	750-750	129,997	97,498

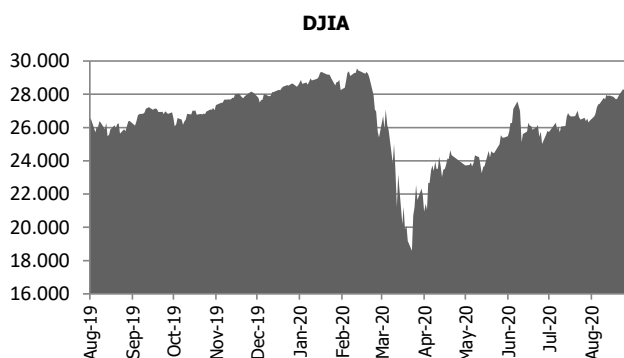
Stock Indices	LAST	YTD Change	YoY Change	Monthly Change
SRX USD	197,34	-9,33%	10,86%	5,51%
DJ BALKAN 50	379,31	-24,76%	43,73%	-0,25%
CECE BANKING	849,04	-38,66%	46,85%	2,11%
DJ Stoxx 50	2986,2	-12,25%	24,86%	1,41%
Eurotop 100	2703,21	-14,23%	24,18%	1,77%
FTSE 100	6018,25	6,43%	22,07%	1,10%
Xetra DAX	13202,84	-0,35%	23,85%	4,88%
S&P 500	3340,97	0,95%	27,06%	0,21%
DJ Industrial	27534,58	0,99%	23,54%	7,04%
Nikkei 225	23139,76	3,99%	23,59%	6,58%



FX & MM Rates	BID	Monthly High	Monthly Low	Monthly Change
EUR/USD	1,1845	1,2011	1,1754	1,36%
EUR/GBP	0,9254	0,9291	0,8867	-0,77%
EUR/CHF	1,0764	1,0877	1,0751	0,28%
EUR/RSD	117,48	117,58	117,58	-0,02%
EUR/JPY	125,75	127,07	124,45	1,35%
3M Euro Deposit	0,53	0,66	0,25	2,94%
3M USD Deposit	0,19	0,41	0,12	0,15%
3M RSD Deposit	9,99	12,19	9,10	4,81%



Commodities	LAST	Units	Monthly Change
Gold	1941,50	\$/oz	-0,25%
Silver	26,74	\$/oz	13,64%
LME Copper	CU 6757.5/57.5	\$/ton	7,24%
LME Aluminum	AL 1746.5/46.5	\$/ton	12,03%
IPE Brent	39,83	\$/bbl	4,37%
IPE Gasoil	324,00	\$/ton	-0,83%
CBOT Wheat	533,75	USc/bsh	2,39%
CBOT Corn	365,00	USc/bsh	9,33%
CBOT Soybean	1005,50	USc/bsh	5,65%
CBOT Soymeal	318,40	USD/ton	5,02%
LIFFE Coffee	1522,00	USD/ton	11,70%
LIFFE Sugar	357,20	USD/ton	-6,09%

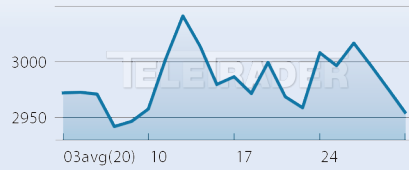


Debt -- CDS	LAST	Term	S&P	Moody's
UNITED KINGDOM	23,61	5Y	AA	Aa2
GERMANY	12,34	5Y	AAA	Aaa
SPAIN	60,51	5Y	A	Baa1
UKRAINE	543,31	5Y	B	Caa1
ROMANIA	66,84	5Y	BBB-	Baa3
HUNGARY	64,53	5Y	BBB	Baa3
CROATIA	67,34	5Y	BBB-	Ba2
JAPAN	16,99	5Y	A+	A1
CHINA	38,84	5Y	A+	A1
ARGENTINA	8312,69	5Y	SD	Caa2
BRAZIL	210,25	5Y	BB-	Ba2
MEXICO	130,47	5Y	A-	A3



DJ STOXX 50

Vrednost
2.954,55



↑ DOBITNICI

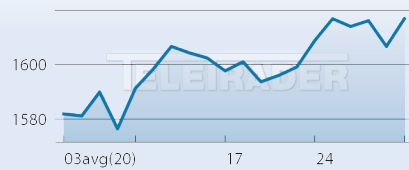
IME	CENA	PROMENA%	OBIM
DAIMLER AG NA O.N.	43,20	16,21%	345.781
AIRBUS	68,60	11,82%	153.417
BASF SE NA O.N.	51,54	10,60%	210.273
PRUDENTIAL PLC LS-	13,70	9,69%	2.870
VINCI S.A. INH. EO 2	79,08	9,08%	6.055

↓ GUBITNICI

IME	CENA	PROMENA%	OBIM
DIAGEO PLC LS-	28,26	-9,70%	22.430
BP PLC DL-	2,96	-5,21%	1.315.898
HSBC HLDGS PLC DL-	3,59	-4,91%	169.074
SANOFI SA INHABER EO 2	85,80	-3,32%	45.753
NATIONAL GRID PLC	9,51	-3,20%	8.938

Crobex

Vrednost
1.617,09



↑ DOBITNICI

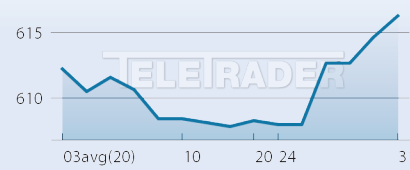
IME	CENA	PROMENA%	OBIM
Đuro Đaković holding d.d.	4,23	135,00%	1.050.216
Dalekovod d.d. - redovne	7,74	37,72%	996.570
Institut IGH d.d. - redovne	145,00	35,51%	68.100
Viro tvornica šećera d.d. -	58,00	19,34%	33.587
TANKERSKA NEXT	55,00	10,00%	39.272

↓ GUBITNICI

IME	CENA	PROMENA%	OBIM
Podravka d.d. - redovne	423,00	0,71%	13.364
Zagrebačka banka d.d. -	50,40	2,86%	45.172
Ericsson Nikola Tesla d.d. -	1.290,00	3,20%	3.209
HT d.d. - redovne dionice	168,00	3,70%	76.702
AD plastik d.d. - redovne	134,50	4,26%	16.680

BIRS

Vrednost
616,31



↑ DOBITNICI

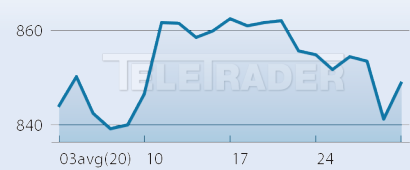
IME	CENA	PROMENA%	OBIM
RITE Ugljevik a.d.	0,04	7,50%	1.360
Telekom Srpske a.d.	1,00	6,39%	564.738
Hydroelektrane na Trebišnjici	0,22	-2,65%	313.853

↓ GUBITNICI

IME	CENA	PROMENA%	OBIM
Hydroelektrane na Trebišnjici	0,22	-2,65%	313.853
Telekom Srpske a.d.	1,00	6,39%	564.738
RITE Ugljevik a.d.	0,04	7,50%	1.360

SBI TOP

Vrednost
848,89



↑ DOBITNICI

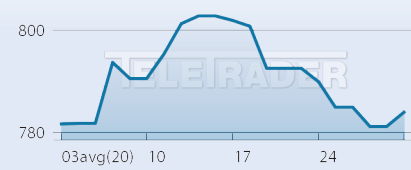
IME	CENA	PROMENA%	OBIM
KRKA	86,60	4,34%	149.977
ZAVAROVALNICA TRIGLAV	28,00	2,94%	42.465
LUKA KOPER	18,80	-0,53%	27.732
TELEKOM SLOVENIJE	46,20	-6,85%	9.466
PETROL	300,00	-8,54%	8.236

↓ GUBITNICI

IME	CENA	PROMENA%	OBIM
PETROL	300,00	-8,54%	8.236
TELEKOM SLOVENIJE	46,20	-6,85%	9.466
LUKA KOPER	18,80	-0,53%	27.732
ZAVAROVALNICA TRIGLAV	28,00	2,94%	42.465
KRKA	86,60	4,34%	149.977

SASX10

Vrednost
783,97



↑ DOBITNICI

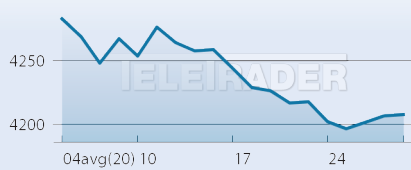
IME	CENA	PROMENA%	OBIM
SARAJEVO OSIGURANJE	13,18	0,61%	164.657

↓ GUBITNICI

IME	CENA	PROMENA%	OBIM
SARAJEVO OSIGURANJE	13,18	0,61%	164.657

MBI10

Vrednost
4.207,36



↑ DOBITNICI

IME	CENA	PROMENA%	OBIM
Komercijalna banka	6.299,00	0,19%	10.422
Alkaloid Skopje	12.200,00	-2,40%	3.619
NLB Banka Skopje	16.900,00	-2,59%	1.184
Makpetrol Skopje	62.500,00	-5,30%	312

↓ GUBITNICI

IME	CENA	PROMENA%	OBIM
Makpetrol Skopje	62.500,00	-5,30%	312
NLB Banka Skopje	16.900,00	-2,59%	1.184
Alkaloid Skopje	12.200,00	-2,40%	3.619
Komercijalna banka	6.299,00	0,19%	10.422

Tehnologiju i podatke obezbedio TeleTrader d.o.o. Podaci o postignutim cenama, procentualnim promenama i obimu su prikazani na mesečnom nivou. Cene su izražene u lokalnim valutama. Uprkos pažljivom preuzimanju i pribavljanju podataka, TeleTrader d.o.o. ne preuzima nikakvu odgovornost za ispravnost, potpunost ili tačnost informacija.

TeleTrader Professional

The Professional Trader's Workstation

Profesionalna platforma za analizu berzanskih podataka

<http://professional.teletrader.com/>

PREUZMITE
BESPLATNU
DEMO
VERZIJU