

Bilten

BEOGRADSKE
BERZE

Godina XXVI
Broj 319
Avgust 2021.

MESEČNI PROMET / MONTHLY TURNOVER

TRŽIŠNI SEGMENT / MARKET SEGMENT	Promet RSD / Turnover RSD	Promena % / % Change (RSD)*	Promet EUR / Turnover EUR	Promena % / % Change (EUR)*	Broj transakcija / No of Transactions
PRIME LISTING-akcije	51,607,731	+73.89%	438,957	+73.88%	839
PRIME LISTING-obveznice Republike Srbije	1,115,804,945	-28.21%	9,490,963	-28.21%	74
STANDARD LISTING-akcije	3,391,900	-88.37%	28,851	-88.37%	25
OPEN MARKET-akcije	38,939,053	-6.61%	331,202	-6.62%	146
MTP-akcije	477,848,321	+932.84%	4,064,414	+932.80%	400

* mesečna promena / * monthly change

METODE TRGOVANJA / TRADING METHODS	Promet RSD / Turnover RSD	Promena % / % Change (RSD)*	Promet EUR / Turnover EUR	Promena % / % Change (EUR)*	Broj transakcija / No of Transactions
Kontinuirano trgovanje / Continuous trading method	1,437,167,150	-15.39%	12,224,382	-15.39%	1,481
Blok trgovanja / Block trading	250,424,800	+9,594.19%	2,130,005	+9,593.67%	3
Ukupno / Total	1,687,591,950	-0.79%	14,354,387	-0.80%	1,484

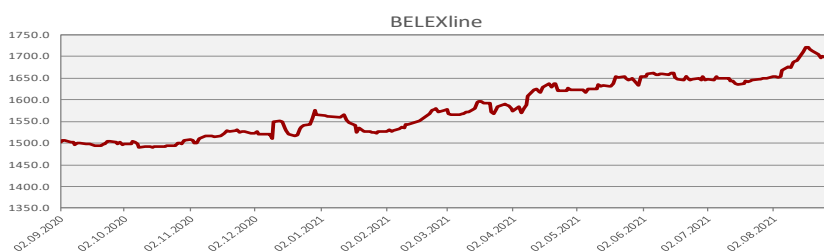
* mesečna promena / * monthly change

STRUKTURA TRGOVANJA / TRADING STRUCTURE	Učešće u ukupnom prometu / Total Turnover	Učešće u ukupnom broju transakcija / Total No. Of Trades	Učešće u prometu akcijama / Turnover - Shares	Učešće u broju transakcija akcijama / No of Trades - Shares
Regulisano tržište / Regulated Market	71.68%	73.05%	16.43%	71.63%
MTP	28.32%	26.95%	83.57%	28.37%
METODE TRGOVANJA / TRADING METHODS				
Kontinuirano trgovanje / Continuous trading	85.16%	99.80%	56.20%	99.79%
Blok trgovanja / Block trading	14.84%	0.20%	43.80%	0.21%
VRSTE HOV / SECURITY TYPE				
Akcije / Shares	33.88%	95.01%	-	-
Obveznice Republike Srbije / RS Bonds	66.12%	4.99%	-	-
Korporativne obveznice / Corporate Bonds	0.00%	0.00%	-	-
INDEKSI / INDICES				
BELEX15	4.20%	62.74%	12.40%	66.03%
BELEXline	5.44%	66.11%	16.06%	69.57%

PROMET U PRETHODNIH 12 MESECI / TURNOVER IN PREVIOUS 12 MONTHS

Mesec / Month	Listing	Open Market	Regulisano / Regulated Market	MTP	Ukupno / Total	Br. Transakcija / No of Transactions
AVGUST 2021	1,170,804,576	38,939,053	1,209,743,629	477,848,321	1,687,591,950	1,484
JUL 2021	1,613,119,599	41,696,072	1,654,815,671	46,265,397	1,701,081,068	1,148
JUN 2021	3,621,882,419	565,050,460	4,186,932,879	105,562,078	4,292,494,957	1,770
MAJ 2021	364,708,913	181,873,825	546,582,738	164,023,381	710,606,119	1,657
APRIL 2021	4,741,499,773	95,863,461	4,837,363,234	219,210,473	5,056,573,707	2,051
MART 2021	1,384,264,827	144,884,876	1,529,149,703	198,744,779	1,727,894,482	1,810
FEBRUAR 2021	5,088,160,062	44,949,749	5,133,109,811	155,648,215	5,288,758,026	1,857
JANUAR 2021	1,347,760,980	16,481,850	1,364,242,830	26,775,647	1,391,018,477	1,038
DECEMBAR 2020	4,574,035,074	288,316,813	4,862,351,887	144,728,160	5,007,080,047	1,923
NOVEMBAR 2020	2,697,283,452	17,597,428	2,714,880,880	69,874,336	2,784,755,216	1,289
OKTOBAR 2020	2,767,941,193	116,908,135	2,884,849,328	63,331,505	2,948,180,833	1,463
SEPTEMBAR 2020	3,451,939,927	10,300,290	3,462,240,217	41,511,949	3,503,752,166	1,009

BELEX15	BELEX15	BELEXline
Vrednost / Value	805,01	1,712.12
% Promena / % Change	+ 3.78%	+ 3.74%
Promena / Change	+ 29.35	+ 61.70
Promet/ Turnover	70,917,493	91,832,784
Vrednost na dan 30.07.2021.	775.66	1,654.40
Najviša vrednost/ Maximum	813.12	1,721.16
Najniža vrednost/ Minimum	775.66	1,651.97
Godišnja promena / Annual change	+ 7.53%	+ 9.33%
PE	27.40	14.25
PB	0.76	0.63
FIS	4.94	3.88
b-FIS	3.78	3.06
s-FIS	6.10	4.71



MESEČNI PREGLED PO HARTIJAMA IZ KORPE INDEKSA BELEX15 / STATISTICS BY BELEX15 BASKET SECURITIES

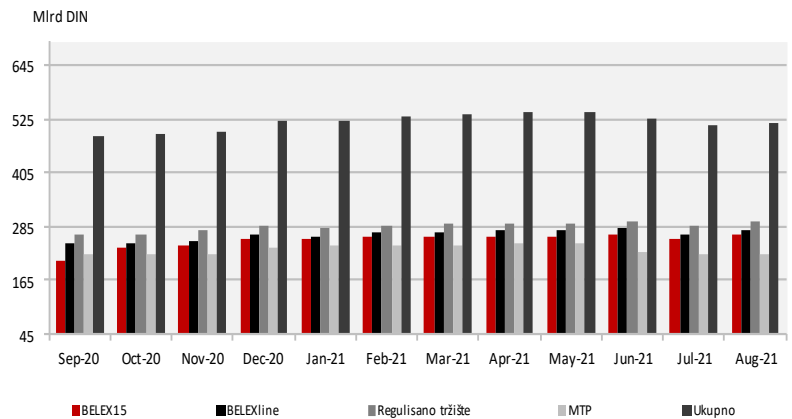
	AERO	ALFA	DNOS	ENHL
Poslednja cena / Last Price	1,049	31,800	3,599	397
Broj transakcija / No. of Trades	367	17	23	6
Obim trgovanja / Volume	7,363	252	965	1,290
Vrednost prometa / Turnover RSD	7,669,500	8,265,260	3,483,096	511,565
Vrednost prometa EUR / Turnover EUR	65,235	70,300	29,626	4,351
Tržišna kapitalizacija / Market Cap	36,742,409,321	5,003,157,600	15,209,809,479	4,339,722,924
Tržišna kapitalizacija EUR / Market Cap EUR	312,540,431	42,558,152	129,378,571	36,914,805
Prosek prometa RSD / Average Turnover RSD	348,613.64	375,693.64	158,322.55	23,252.95
Prosek prometa EUR / Average Turnover EUR	2,965.25	3,195.43	1,346.63	197.78
Prosek broja transakcija / Average No. of Trades	16.68	0.77	1.05	0.27
FIS	6.67%	4.45%	23.98%	4.68%
b-FIS	9.49%	%	29.66%	%
s-FIS	3.86%	8.89%	18.29%	9.37%

	FINT	IMPL	JESV	KMBN
Poslednja cena / Last Price	600	3,400	9,000	3,700
Broj transakcija / No. of Trades	1	7	16	3
Obim trgovanja / Volume	500	308	197	302
Vrednost prometa / Turnover RSD	300,000	1,039,900	1,714,810	1,127,410
Vrednost prometa EUR / Turnover EUR	2,552	8,845	14,586	9,589
Tržišna kapitalizacija / Market Cap	15,906,303,600	3,203,775,800	2,296,170,000	62,226,437,200
Tržišna kapitalizacija EUR / Market Cap EUR	135,303,130	27,252,145	19,531,816	529,314,159
Prosek prometa RSD / Average Turnover RSD	13,636.36	47,268.18	77,945.91	51,245.91
Prosek prometa EUR / Average Turnover EUR	115.98	402.04	663.00	435.88
Prosek broja transakcija / Average No. of Trades	0.05	0.32	0.73	0.14
FIS	0.00%	0.00%	25.37%	34.90%
b-FIS	%	%	%	%
s-FIS	%	%	50.73%	69.81%

	MTLC	NIIS	TGAS
Poslednja cena / Last Price	1,860	610	16,500
Broj transakcija / No. of Trades	6	465	20
Obim trgovanja / Volume	290	70,114	205
Vrednost prometa / Turnover RSD	549,680	43,126,666	3,129,606
Vrednost prometa EUR / Turnover EUR	4,675	366,818	26,620
Tržišna kapitalizacija / Market Cap	3,794,400,000	99,466,844,000	17,104,857,000
Tržišna kapitalizacija EUR / Market Cap EUR	32,276,147	846,090,685	145,498,335
Prosek prometa RSD / Average Turnover RSD	24,985.45	1,960,303.00	142,254.82
Prosek prometa EUR / Average Turnover EUR	212.52	16,673.56	1,209.99
Prosek broja transakcija / Average No. of Trades	0.27	21.14	0.91
FIS	0.00%	1.13%	14.36%
b-FIS	%	2.13%	%
s-FIS	%	0.12%	28.73%

TRŽIŠNA KAPITALIZACIJA / MARKET CAPITALIZATION

	U hiljadama / In thousands RSD	U hiljadama / In thousands EUR
Ukupno/Total	518,286,382	4,408,678
Regulisano tržište/ Regulated Market	295,456,118	2,513,226
Listing	224,772,287	1,911,971
Prime Listing –akcije / shares	156,455,280	1,330,849
Standard Listing–akcije / shares	68,317,007	581,122
Open Market	70,683,831	601,255
MTP	222,830,264	1,895,452
BELEX15	265,293,887	2,256,658
BELEXline	276,600,391	2,352,834



SEKTORSKA KLASIFIKACIJA – AKCIJE / SECTOR CLASSIFICATION – SHARES

Sektor / Sector	Promet – Akcije / Turnover - Shares	Br. transakcija – Akcije / No. Of Trades - Shares	Tržišna kapitalizacija / Market Capitalization	FIS
Prerađivačka industrija	22,391,715	133	174,388,486,147	8.80%
Rudarstvo	43,126,666	465	100,114,972,719	1.13%
Finansijske delatnosti i delatnost osiguranja	19,639,878	64	89,725,345,375	7.06%
Trgovina na veliko i malo i popravka motornih vozila	17,616,000	6	39,863,184,839	0.00%
Poslovanje nekretninama	7,669,500	367	38,107,556,719	6.67%
Građevinarstvo	5,796,913	25	22,764,520,131	7.53%
Poljoprivreda, šumarstvo i ribarstvo	454,144,883	332	16,134,221,396	4.41%
Snabdevanje električnom energijom, gasom i parom	300,000	1	15,906,303,600	0.00%
Saobraćaj i skladištenje	999,350	9	11,713,008,319	0.00%
Stručne, naučne, inovacione i tehničke delatnosti	95,500	7	3,283,279,829	0.00%
Usluge smeštaja i ishrane		0	3,071,762,713	0.00%
Informisanje i komunikacije		0	2,046,301,961	0.00%
Administrativne i pomoćne uslužne delatnosti	6,600	1	631,408,183	0.00%
Obrazovanje		0	203,830,124	0.00%
Ostale uslužne delatnosti		0	172,571,260	0.00%
Umetnost, zabava i rekreacija		0	102,219,000	0.00%
Snabdevanje vodom i upravljanje otpadnim vodama		0	53,617,230	0.00%
Zdravstvena i socijalna zaštita		0	3,792,040	0.00%

UČEŠĆE ČLANOVA U PROMETU / PARTICIPATION OF STOCK EXCHANGE MEMBERS IN THE TURNOVER

REGULISANO TRŽIŠTE / REGULATED MARKET

Član Berze / Member	Udeo u prometu / Participation in Turnover (%)	Udeo u broju transakcija / Participation in No. Of Transactions (%)
UniCredit Bank Srbija a.d., Beograd	31.57%	0.09%
OTP banka Srbija a.d., Novi Sad	27.16%	9.18%
Raiffeisen banka a.d., Beograd	14.24%	4.75%
Mediolanum invest a.d., Beograd	14.04%	0.05%
Banka Poštanska štedionica a.d., Beograd	6.18%	29.61%
Komercijalna banka a.d., Beograd	2.02%	16.79%
Tesla Capital a.d., Beograd	1.03%	10.84%
M&V Investments a.d., Beograd	0.81%	5.44%
Dunav Stockbroker a.d., Beograd	0.57%	3.37%
Momentum Securities a.d., Novi Sad	0.54%	8.16%
Ostali	1.83%	11.72%

MTP

Član Berze / Member	Udeo u prometu / Participation in Turnover (%)	Udeo u broju transakcija / Participation in No. Of Transactions (%)
Momentum Securities a.d., Novi Sad	39.82%	8.94%
Tesla Capital a.d., Beograd	28.82%	30.35%
Intercity broker a.d., Beograd	15.62%	6.68%
M&V Investments a.d., Beograd	6.53%	41.18%
Ilirika investments a.d., Beograd	5.22%	2.27%
Tandem financial a.d., Novi Sad	1.90%	1.13%
Komercijalna banka a.d., Beograd	0.67%	3.65%
Dunav Stockbroker a.d., Beograd	0.45%	0.25%
OTP banka Srbija a.d., Novi Sad	0.34%	1.13%
Erste bank a.d., Novi Sad	0.26%	2.02%
Ostali	0.37%	2.39%

UČEŠĆE STRANIH INVESTITORA / FOREIGN INVESTORS PARTICIPATION—FIT, FIS, FIB

Mesec / Month	FIT	FIS	b-FIS	s-FIS	FIB
AVGUST 2021	1.81%	4.34%	3.90%	4.78%	0.52%
JUL 2021	2.13%	23.41%	15.11%	31.70%	0.12%
JUN 2021	0.31%	1.43%	1.37%	1.50%	0.08%
MAJ 2021	2.27%	3.63%	1.16%	6.10%	0.45%
APRIL 2021	12.35%	23.22%	40.71%	5.74%	10.34%
MART 2021	7.66%	11.00%	11.16%	10.83%	6.40%
FEBRUAR 2021	20.34%	40.03%	18.42%	61.65%	17.19%
JANUAR 2021	12.64%	12.80%	19.65%	5.95%	12.63%
DECEMBAR 2020	11.22%	22.98%	26.97%	18.98%	9.13%
NOVEMBAR 2020	5.80%	33.35%	50.55%	16.14%	3.76%
OKTOBAR 2020	19.24%	22.70%	22.10%	23.30%	18.92%
SEPTEMBAR 2020	2.65%	37.18%	35.12%	39.25%	1.38%

Prema specifikaciji klijenata Centralnog registra / According to the Central depository clients

NAJVEĆE PROMENE CENE, REGULISANO TRŽIŠTE / BIGGEST PRICE CHANGES, REGULATED MARKET

Izdavalac / Issuer	Cena / Price 31.08.2021.	Cena / Price 30.07.2021.	Promena % / % Change	Izdavalac / Issuer	Cena / Price 31.08.2021.	Cena / Price 30.07.2021.	Promena % / % Change
Alfa plam a.d., Vranje, ALFA	31,800	20,700	+ 53.62%	Metalac a.d., Gornji Milanovac, MTLT	1,860	1,900	-2.11%
Komercijalna banka a.d., Beograd, KMBNPB	1,550	1,120	+ 38.39%	Dunav osiguranje a.d., Beograd, DNOS	3,599	3,650	-1.40%
Tigar a.d., Pirot, TIGR	17	14	+ 21.43%	Impol Seval a.d., Sevojno, IMPL	3,400	3,443	-1.25%
Energoprojekt holding a.d., Beograd, ENHL	397	340	+ 16.76%	Philip Morris Operations a.d., Niš, DINNPB	7,390	7,400	-0.14%
Messer Tehnogas a.d., Beograd, TGAS	16,500	14,500	+ 13.79%	Komercijalna banka a.d., Beograd,	3,700	3,701	-0.03%

NAJVEĆA VREDNOST PROMETA, REGULISANO TRŽIŠTE / BIGGEST TURNOVER, REGULATED MARKET

Izdavalac / Issuer	Vrednost prometa / Turnover	Blok trgovanja / Block Trades	Izdavalac / Issuer	Vrednost prometa / Turnover	Blok trgovanja / Block Trades
NIS a.d., Novi Sad, NIIS	43,126,666	0	Dunav osiguranje a.d., Beograd, DNOS	3,483,096	0
Komercijalna banka a.d., Beograd, KMBNPB	13,702,450	0	Messer Tehnogas a.d., Beograd, TGAS	3,129,606	0
Alfa plam a.d., Vranje, ALFA	8,265,260	0	VP Dunav a.d., Bačka Palanka, VPDU	1,884,000	0
Aerodrom Nikola Tesla a.d., Beograd, AERO	7,669,500	0	Jedinstvo a.d., Sevojno, JESV	1,714,810	0
Philip Morris Operations a.d., Niš, DINNPB	7,424,964	0	Komercijalna banka a.d., Beograd, KMBN	1,127,410	0

**NAJNIŽI P/E, REGULISANO TRŽIŠTE /
LOWEST P/E, REGULATED MARKET**

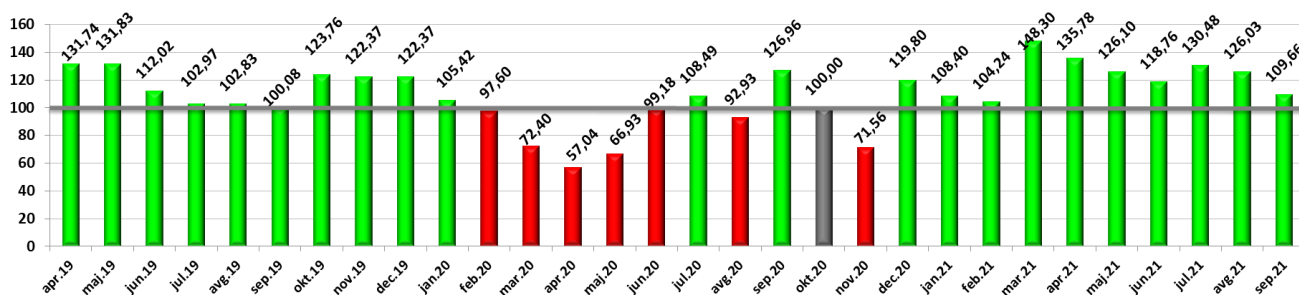
Izdavalac / Issuer	P/E	Izdavalac / Issuer	P/E
Dunav osiguranje a.d., Beograd	4.76	VP Dunav a.d., Bačka Palanka	21.13
Jedinstvo a.d., Sevojno	7.06	Energoprojekt holding a.d., Beograd	26.24
Messer Tehnogas a.d., Beograd	9.04	Alfa plam a.d., Vranje	46.06
Metalac a.d., Gornji Milanovac	14.88	Impol Seval a.d., Sevojno	268.30
Kopaonik a.d., Beograd	15.58		

**NAJNIŽI P/B, REGULISANO TRŽIŠTE /
LOWEST P/B, REGULATED MARKET**

Izdavalac / Issuer	P/B	Izdavalac / Issuer	P/B
ALTA banka a.d., Beograd	0.31	Alfa plam a.d., Vranje	0.62
NIS a.d., Novi Sad	0.40	Lasta a.d., Beograd	0.66
Kopaonik a.d., Beograd	0.44	Jedinstvo a.d., Sevojno	0.83
Energoprojekt holding a.d., Beograd	0.47	Komercijalna banka a.d., Beograd	0.86
Impol Seval a.d., Sevojno	0.48	Messer Tehnogas a.d., Beograd	0.87

NAJVEĆA TRŽIŠNA KAPITALIZACIJA, REGULISANO TRŽIŠTE / BIGGEST MARKET CAPITALIZATION, REGULATED MARKET

Izdavalac / Issuer	Simbol	Tržišna kapitalizacija - mil RSD / Market Capitalization—mil RSD	FFc	Izdavalac / Issuer	Simbol	Tržišna kapitalizacija - mil RSD / Market Capitalization—mil RSD	FFc
NIS a.d., Novi Sad	NIIS	99,466.844	0.14	Fintel energija a.d., Beograd	FINT	15,906.304	0.06
Komercijalna banka a.d., Beograd	KMBN	62,226.437	0.17	Dunav osiguranje a.d., Beograd	DNOS	15,209.809	0.06
Aerodrom Nikola Tesla a.d., Beograd	AERO	36,742.409	0.15	Alfa plam a.d., Vranje	ALFA	5,003.158	0.15
Philip Morris Operations a.d., Niš	DINNPB	24,451.796	0.11	Energoprojekt holding a.d., Beograd	ENHL	4,339.723	0.13
Messer Tehnogas a.d., Beograd	TGAS	17,104.857	0.18	Metalac a.d., Gornji Milanovac	MTLT	3,794.400	0.79

BELEXsentiment


LISTING

PRIME LISTING—AKCIJE / SHARES

Izdavalac / Issuer	Simbol / Symbol	Cena / Price	Mesečna promena % / Monthly Change %	Obim / Volume	Promet (RSD) / Turnover (RSD)	Raspon cene-52 nedelje / 52 Weeks High/Low	Broj emitovanih akcija / Number of Shares Issued	%Prinos (dividenda) / Dividend	P/E	P/B
Aerodrom Nikola Tesla a.d., Beograd	AERO	1,049	+ 3.86%	7,363	7,669,500	853 - 1,100	35,026,129	0.00	-45.98	1.27
Energoprojekt holding a.d., Beograd	ENHL	397	+ 16.76%	1,290	511,565	301 - 450	10,931,292	0.00	26.24	0.47
Fintel energija a.d., Beograd	FINT	600	0.00%	500	300,000	590 - 667	26,510,506	0.00	-445.24	36.99
NIS a.d., Novi Sad	NIS	610	+ 1.50%	70,114	43,126,666	530 - 650	163,060,400	0.04	-16.83	0.40

PRIME LISTING—OBVEZNICE RS / RS BONDS

Simbol / Symbol	Cena / Price	Mesečna promena %	Promet RSD / Turnover RSD	Mesečni raspon cene / Monthly High/Low
RSO18174	123.9034	+ 1.2066%	763,787,902	123.5139-123.9034
RSO20191	120.3650	+ 1.0825%	339,610,425	120.3650-120.3650
RSSDS20214	96.4000	0.0000%	2,336,026	96.4000-96.4000
RSSDS20225	95.2000	0.0000%	2,912,753	95.2000-95.2100
RSSDS20226	94.1200	-0.4021%	2,417,866	94.1200-94.5000
RSSDS20237	93.1000	0.0000%	2,384,070	93.1000-93.1000
RSSDS20238	92.0000	0.0000%	2,355,902	92.0000-92.0000

STANDARD LISTING—AKCIJE / SHARES

Izdavalac / Issuer	Simbol / Symbol	Cena / Price	Mesečna promena % / Monthly Change %	Obim / Volume	Promet (RSD) / Turnover (RSD)	Raspon cene-52 nedelje / 52 Weeks High/Low	Broj emitovanih akcija / Number of Shares Issued	%Prinos (dividenda) / Dividend	P/E	P/B
Jedinstvo a.d., Sevojno	JESV	9,000	+ 5.88%	197	1,714,810	6,444 - 9,000	255,130	0.07	7.06	0.83
Komercijalna banka a.d., Beograd	KMBN	3,700	-0.03%	302	1,127,410	2,600 - 3,799	16,817,956	0.00		0.86
Metalac a.d., Gornji Milanovac	MTLC	1,860	-2.11%	290	549,680	1,811 - 1,950	2,040,000	0.04	14.88	1.11

OPEN MARKET

AKCIJE / SHARES

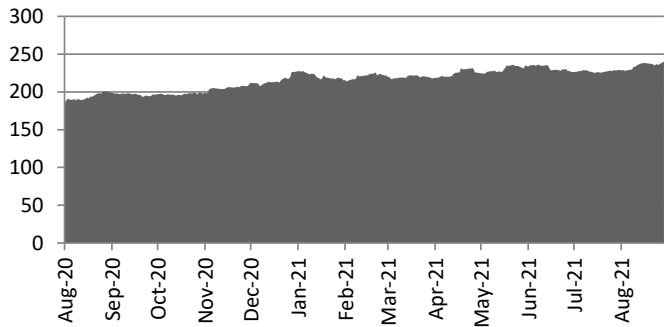
Izdavalac / Issuer	Simbol / Symbol	Cena / Price	Mesečna promena % / Monthly Change %	Obim / Volume	Promet (RSD) / Turnover (RSD)	Raspon cene-52 nedelje / 52 Weeks High/Low	Broj emitovanih akcija / Number of Shares Issued	Tržišna kapitalizacija / Market Capitalization
Alfa plam a.d., Vranje	ALFA	31,800	+ 53.62%	252	8,265,260	20700-38000	157,332	5,003,158
Philip Morris Operations a.d., Niš	DINNPB	7,390	-0.14%	1,025	7,424,964	5850-7450	3,308,768	24,451,796
Dunav osiguranje a.d., Beograd	DNOS	3,599	-1.40%	965	3,483,096	3051-4500	4,226,121	15,209,809
Impol Seval a.d., Sevojno	IMPL	3,400	-1.25%	308	1,039,900	3100-3800	942,287	3,203,776
Komercijalna banka a.d., Beograd	KMBNPB	1,550	+ 38.39%	9,220	13,702,450	712-1650	373,510	578,941
Kopaonik a.d., Beograd	KOPB	8,000	0.00%	1	8,000	7100-8000	138,906	1,111,248
Messer Tehnogas a.d., Beograd	TGAS	16,500	+ 13.79%	205	3,129,606	13000-16500	1,036,658	17,104,857
Tigar a.d., Pirotd	TIGR	17	+ 21.43%	105	1,777	13-26	8,156,236	138,656
VP Dunav a.d., Bačka Palanka	VPDU	12,000	0.00%	157	1,884,000	12000-12000	10,216	122,592

AKCIJE

Izdavalac	Simbol	Cena	Mesečna promena %	Obim	Promet (DIN)	Raspon cene-52 nedelje	Broj emitovanih akcija	Tržišna kapitalizacija
Agrobačka a.d. , Bačka Topola	AGBC	250	-7.41%	6	1,500	250-270	80,799	20,200
AMS Osiguranje a.d. , Beograd	AMSO	1,501	+ 6.38%	175	263,900	1015-1550	314,550	472,140
Aquatus a.d. , Beograd	AQUA	108	0.00%	637	68,796	106-108	237,718	25,674
BAS a.d. , Beograd	BASB	801	0.00%	250	200,250	800-801	311,187	249,261
BB Trade a.d. , Žitište	BBTR	8,000	+ 72.04%	92	664,250	6975-8000	55,012	440,096
Dinara a.d. , Beograd	DINR	500	+ 24.69%	344	172,000	280-500	212,055	106,028
Ikarbus a.d. , Beograd	IKRBG	50	0.00%	500	25,000	39-50	2,901,482	145,074
Informatika a.d. , Beograd	INFM	1,450	-19.44%	120	169,100	1011-1800	180,011	261,016
Irmovo a.d. , Kisač	IRMV	2,700	0.00%	98	264,600	1703-3000	106,219	286,791
Iritel a.d. , Beograd	IRTL	1,175	-2.08%	80	95,500	1000-1940	290,104	340,872
Jugoprevoz Kruševac a.d. , Kruševac	JGPK	2,547	-0.89%	226	578,100	2300-2600	76,138	193,923
Luka Leget a.d. , Sremska Mitrovica	LKLG	2,210	0.00%	100	221,000	1500-3850	181,494	401,102
Novosadski sajam a.d. , Novi Sad	NSSJ	600	0.00%	11	6,600	600-600	818,947	491,368
Omoljica a.d. , Omoljica	OMOL	3,600	-0.03%	47,566	183,275,550	780-3999	326,875	1,176,750
Planum GP a.d. , Beograd	PLNM	490	0.00%	10	4,900	490-490	414,110	202,914
PP Miletić a.d. , Srpski Miletić	PMLT	4,015	+ 0.38%	611	2,631,805	1301-6590	201,924	810,725
Putevi a.d. , Užice	PUUE	195	+ 14.71%	152	29,340	66-195	982,241	191,537
Rudo a.d. , Beograd	RUDO	200	0.00%	298	59,600	155-200	666,051	133,210
Sloga a.d. , Kač	SLPP	726	+ 1.11%	378	274,428	550-804	246,101	178,669
Sremput a.d. , Ruma	SPRU	1,000	-0.10%	203	203,003	1000-1001	152,134	152,134
Srbijaput a.d. , Beograd	SRPU	220	0.00%	33	7,260	220-220	99,056	21,792
Tehnohemija a.d. , Beograd	THHM	250	-16.67%	67,119	16,779,750	227-300	1,024,544	256,136
Utva silosi a.d. , Kovin	UTSI	3,010	+ 0.33%	367	1,102,265	1400-3010	165,729	498,844
Voda Vrnjci a.d. , Vrnjačka Banja	VDVAV	3,250	+ 8.33%	9	29,250	3000-3600	114,787	373,058
Vital a.d. , Vrbas	VITL	1,080	-0.18%	23	24,879	900-1300	763,937	825,052
Vojvodina a.d. , Sombor	VJSO	2,700	+ 71.76%	7,161	19,225,800	1572-2700	170,885	461,390
Žitopek a.d. , Niš	ZTPK	579	0.00%	1,805	1,045,095	570-650	247,899	143,534

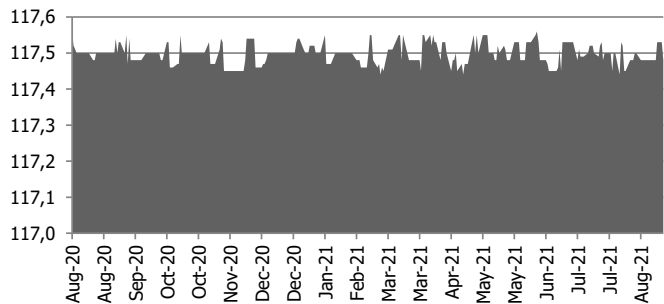
Stock Indices	LAST	YTD Change	YoY Change	Monthly Change
SRX USD	240,08	6,07%	10,86%	4,97%
DJ BALKAN 50	482,53	9,11%	43,73%	4,49%
CECE BANKING	1506,34	48,73%	46,85%	9,18%
DJ Stoxx 50	3573,07	14,95%	24,86%	1,70%
Eurotop 100	3361,07	16,60%	24,18%	1,75%
FTSE 100	7027,45	6,43%	22,07%	1,23%
Xetra DAX	15722,99	14,61%	23,85%	1,84%
S&P 500	4468,73	18,29%	30,63%	-0,11%
DJ Industrial	34577,57	12,97%	23,51%	-2,17%
Nikkei 225	30511,71	11,18%	29,97%	10,61%

SRX/ USD



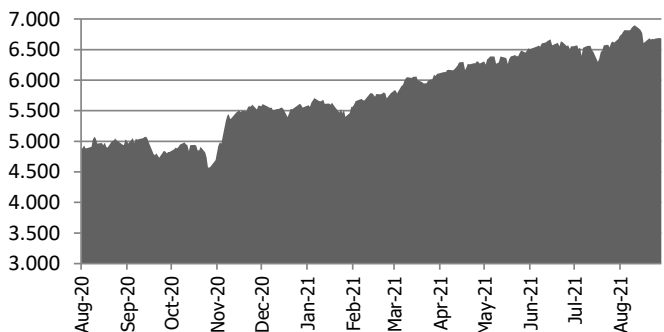
FX & MM Rates	BID	Monthly High	Monthly Low	Monthly Change
EUR/USD	1,1802	1,1908	1,1771	-0,53%
EUR/GBP	0,8543	0,8613	0,8511	0,56%
EUR/CHF	1,086	1,0904	1,0807	0,60%
EUR/RSD	117,48	117,54	117,56	-0,02%
EUR/JPY	129,48	130,74	129,23	-0,21%
3M Euro Deposit	0,53	0,66	0,25	0,73%
3M RSD Deposit	9,99	12,19	9,10	4,81%

EUR/RSD



Commodities	LAST	Units	Monthly Change
Gold	1804,27	\$/oz	-0,01%
Silver	23,83	\$/oz	-6,59%
LME Copper	CU 9406,1	\$/ton	7,24%
LME Alluminum	AL 2846,5	\$/ton	12,03%
IPE Brent	73,60	\$/bbl	-4,58%
IPE Gasoil	615,00	\$/ton	-1,95%
CBOT Wheat	700,75	USc/bsh	0,42%
CBOT Corn	520,25	USc/bsh	-2,43%
CBOT Soybean	1282,50	USc/bsh	-8,93%
CBOT Soymeal	338,00	USD/ton	-1,79%
LIFFE Coffee	2072,00	USD/ton	11,72%
LIFFE Sugar	495,60	USD/ton	7,78%

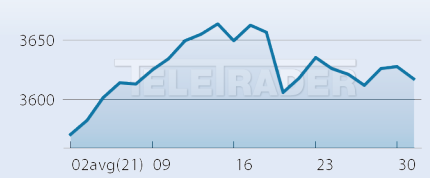
CAC 40



Debt -- CDS	LAST	Term	S&P	Moody's
UNITED KINGDOM	11,57	5Y	AA	Aa2
GERMANY	10,09	5Y	AAA	Aaa
SPAIN	29,38	5Y	A	Baa1
UKRAINE	441,19	5Y	B	Caa1
ROMANIA	89,49	5Y	BBB-	Baa3
HUNGARY	54,11	5Y	BBB	Baa3
CROATIA	76,95	5Y	BBB-	Ba2
JAPAN	15,98	5Y	A+	A1
CHINA	46,80	5Y	A+	A1
ARGENTINA	8312,69	5Y	SD	Caa2
BRAZIL	189,70	5Y	BB-	Ba2
MEXICO	92,89	5Y	A-	A3



DJ STOXX 50 Vrednost 3.617,19



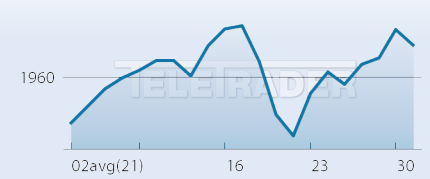
↑ DOBITNICI

IME	CENA	PROMENA%	OBIM
ADYEN N.V. EO-	2.717,50	17,06%	671
PRUDENTIAL PLC LS-	17,50	10,76%	12.739
NOVO-NORDISK NAM.B	85,38	10,34%	72.749
ASML HOLDING EO-	709,80	10,17%	10.202
SCHNEIDER ELEC. INH. EO	151,80	9,13%	5.739

↓ GUBITNICI

IME	CENA	PROMENA%	OBIM
RIO TINTO PLC LS-	62,70	-16,95%	78.760
KERING S.A. INH. EO 4	676,70	-10,58%	2.361
LVMH EO 0	639,80	-6,92%	14.365
BAYER AG NA O.N.	48,07	-6,05%	416.311
BHP GROUP PLC DL-	26,55	-5,68%	60.092

Crobex Vrednost 1.967,54



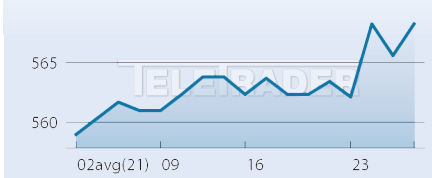
↑ DOBITNICI

IME	CENA	PROMENA%	OBIM
Atlantska plovdba d.d. -	470,00	15,20%	31.204
Zagrebačka banka d.d. -	62,00	4,73%	41.361
Valamar Riviera d.d.	29,60	3,86%	328.988
HT d.d. - redovne dionice	190,50	-0,26%	43.442
Viktor Lenac d.d. -	9,65	-1,03%	187.099

↓ GUBITNICI

IME	CENA	PROMENA%	OBIM
OT - Optima Telekom d.d.	4,80	-3,03%	1.011.530
Atlantic grupa d.d. -	1.500,00	-1,96%	2.674
Viktor Lenac d.d. -	9,65	-1,03%	187.099
HT d.d. - redovne dionice	190,50	-0,26%	43.442
Valamar Riviera d.d.	29,60	3,86%	328.988

BIRS Vrednost 565,57



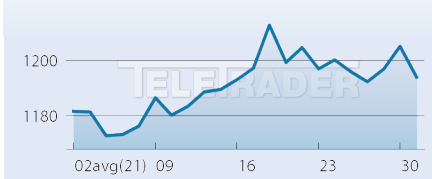
↑ DOBITNICI

IME	CENA	PROMENA%	OBIM
Telekom Srpske a.d.	1,10	3,77%	482.437

↓ GUBITNICI

IME	CENA	PROMENA%	OBIM
Telekom Srpske a.d.	1,10	3,77%	482.437

SBI TOP Vrednost 1.193,89



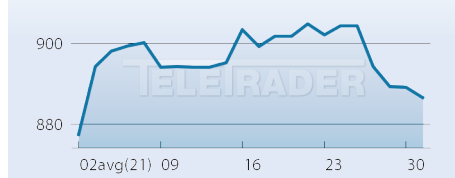
↑ DOBITNICI

IME	CENA	PROMENA%	OBIM
LUKA KOPER	26,00	4,84%	64.896
KRKA	113,00	3,67%	89.833
ZAVAROVANICA TRIGLAV	34,70	3,27%	42.719
PETROL	449,00	-0,22%	4.678
TELEKOM SLOVENIJE	58,00	-7,94%	18.968

↓ GUBITNICI

IME	CENA	PROMENA%	OBIM
TELEKOM SLOVENIJE	58,00	-7,94%	18.968
PETROL	449,00	-0,22%	4.678
ZAVAROVANICA TRIGLAV	34,70	3,27%	42.719
KRKA	113,00	3,67%	89.833
LUKA KOPER	26,00	4,84%	64.896

SASX10 Vrednost 886,61



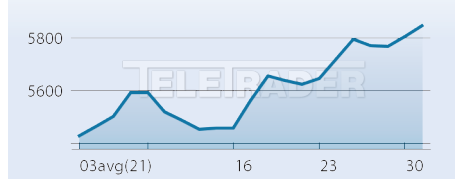
↑ DOBITNICI

IME	CENA	PROMENA%	OBIM
TRGOVINA BORAC D.D.	2,00	0,00%	4.119
BOSNALIJEK D.D.	27,50	0,00%	21.559
JP ELEKTROPRIVREDA BIH	9,50	-2,06%	7.924
BADECO ADRIA D.D.	250,00	-4,58%	860

↓ GUBITNICI

IME	CENA	PROMENA%	OBIM
BADECO ADRIA D.D.	250,00	-4,58%	860
JP ELEKTROPRIVREDA BIH	9,50	-2,06%	7.924
BOSNALIJEK D.D.	27,50	0,00%	21.559
TRGOVINA BORAC D.D.	2,00	0,00%	4.119

MBI10 Vrednost 5.846,49



↑ DOBITNICI

IME	CENA	PROMENA%	OBIM
NLB Banka Skopje	26.750,00	23,84%	2.270
Stopanska banka Skopje	1.353,00	13,60%	26.782
Granit Skopje	1.349,00	11,95%	10.373
Komercijalna banka	10.610,00	10,52%	19.846
Alkaloid Skopje	17.000,00	7,94%	3.364

↓ GUBITNICI

IME	CENA	PROMENA%	OBIM
Makedonski Telekom	340,00	-1,45%	12.734
TTK Banka AD Skopje	1.450,00	-1,29%	5.578
Makpetrol Skopje	79.997,00	7,38%	784
Alkaloid Skopje	17.000,00	7,94%	3.364
Komercijalna banka	10.610,00	10,52%	19.846

Tehnologiju i podatke obezbedio TeleTrader d.o.o. Podaci o postignutim cenama, procentualnim promenama i obimu su prikazani na mesečnom nivou. Cene su izražene u lokalnim valutama. Uprkos pažljivom preuzimanju i pribavljanju podataka, TeleTrader d.o.o. ne preuzima nikakvu odgovornost za ispravnost, potpunost ili tačnost informacija.

TeleTrader Professional

The Professional Trader's Workstation

Profesionalna platforma za analizu berzanskih podataka

<http://professional.teletrader.com/>

